

Faculty of Resource Science and Technology

**Metal Contamination in *Macrobrachium rosenbergii* from Lupar River,
Sarawak and its Risk to Human Health**

Aleematun Farhana Bt Haron (72082)

Bachelor Science with Honours
(Aquatic Resource Science and Management)
2022

Metal Contamination in *Macrobrachium rosenbergii* from Lupar River, Sarawak and its Risk to Human Health

Aleematun Farhana Binti Haron

A Final Year Project submitted
in partial fulfilment of the requirement for degree of Bachelor of Science with Honours

Supervisor: Dr. Farah Akmal Bt Idrus

Aquatic Resource Science and Management
Faculty of Resource Science and Technology
Universiti Malaysia Sarawak

6/6/2022

DECLARATION

I declare that this thesis has been written entirely by myself and has not been submitted, in whole or in part, as part of a previous degree application. All of the sources that were used for this study are fully acknowledged, and all of the quotations are properly cited.



Aleematun Farhana Bt Haron

72082

Faculty of Resource Science and Technology

Universiti Malaysia Sarawak

Date: 27th June 2022

ACKNOWLEDGEMENT

First and foremost, I would like to praise and thank God, the Almighty, who has granted countless blessings, knowledge, and strength to accomplish my thesis. A special thanks to my supervisor, Dr. Farah Akmal Bt. Idrus, for giving me the opportunity to discover this study on my own and training me to work independently throughout this study. However, she never failed to guide me when I was lost in the midst of my academic adventure, providing valuable guidance and feedback and encouraging me to experience the real research environment. This thesis could not have been completed without her support during the entire procedure. I would like to thank you very much for your support and understanding throughout my Final Year Project study. I would also like to thank Dr. Fazimah Bt Aziz for all of her guidance and insightful feedback.

Next, I would like to express my gratitude to Madam Lucy Anak Daru, who took the time to assist and guide me in the use of laboratory equipment, and Mr. Tomy Bakeh, who provided invaluable guidance and advice throughout the FAAS session. To Miss Vanessa Rae and Mister Hans Isaac, thank you so much for all of your friendship and help throughout this process and for being a great bunch of people in and out of the lab.

Throughout my studies here, I have many people to thank for their patience and understanding. I'm deeply indebted to Miss Aimi Rizky, who gave me unwavering personal and professional support then until now. I must thank everyone, including Miss Hazanariah Nasir, Miss Nurassyakirah Hamdi, and Miss Robena Ravena Ramba, who accompanied me everywhere I went and stayed up with me for countless unforgettable nights. Without them, this accomplishment would not have been possible.

Most importantly, none of this could have happened without my family, especially my beloved parents. My warm and heartfelt thanks go to my family for their tremendous support and hope they have given me. Without that hope, this thesis would not have been possible. Thank you all for the strength you gave me. I would also like to express my heartfelt gratitude to Akamaruchan for all the entertainment and endless emotional support. Lastly, I want to thank me, for believing in me, for doing all this hard work, for having no days off and for never quitting.

Metal Contamination in *Macrobrachium rosenbergii* from Lupar River, Sarawak and its Risk to Human Health

Aleematun Farhana Bt Haron

Aquatic Resource Science and Management
Faculty of Resource Science and Technology
Universiti Malaysia Sarawak

ABSTRACT

The abundance of *Macrobrachium rosenbergii* in the Lupar River has become a source of food and economic activity for the locals. The influence of human activity surrounding the Lupar River, has the potential to deteriorate the water quality and sediment, as well as the organic organisms inside it. The objectives of this study were to investigate the contamination level of heavy metals in the muscle tissues, hepatopancreas, exoskeletons, and gills of *M. rosenbergii* and to assess their risk to human health. The trend of heavy metal contamination in *M. rosenbergii* from the Lupar River are as follows: Cd (BDL) < Mn (3.22–24.22 mg/kg) < Cu (4.55–44.28 mg/kg) < Co (33.63–126.03 mg/kg) < Al (388.42–60.67 mg/kg) < Fe (832.26–42.49 mg/kg) with their concentrations high in hepatopancreas > gills > exoskeletons > muscle tissues. There was a positive correlation of total length and total weight of *M. rosenbergii* ($r = 0.941$, $p < 0.001$), indicated an increase in total length would result in an increase of total weight. A positive correlation of Cu, Mn, and Fe in muscle tissues, gills, and hepatopancreas was detected with the increasing size. The Lupar River has a Hazard Index (HI) of 80.94 for heavy metals which is hazardous to human health. All metals were above the permissible limits. Therefore, *M. rosenbergii* from Lupar River were contaminated enough to pose a high risk to human health.

Keywords: *Macrobrachium rosenbergii*, heavy metals, human health risk, Lupar River.

ABSTRAK

Sungai Batang Lupar yang kaya dengan *Macrobrachium rosenbergii* telah menjadi sumber makanan dan aktiviti ekonomi penduduk setempat. Pengaruh daripada aktiviti manusia di persisiran sungai Batang Lupar berpotensi untuk menyumbang kepada kemerosotan kualiti air, sedimen dan hidupan semulajadi di dalam sungai tersebut. Tujuan kajian ini adalah untuk mengkaji tahap pencemaran logam berat yang terdapat pada tisu otot, hepatopankreas, kerangka luar dan insang serta menilai risikonya kepada kesihatan manusia. Arah aliran pencemaran logam berat pada *M. rosenbergii* dari sungai Batang Lupar adalah seperti berikut: Cd (BDL) > Mn (3.22 - 24.22 mg/kg) > Cu (4.55 - 44.28 mg/kg) > Co (33.63 - 126.03 mg/kg) > Al (388.42 - 60.67 mg/kg) > Fe (832.26 - 42.49 mg/kg) dengan kepekatan tinggi dalam hepatopankreas > insang > kerangka luar > tisu otot. Terdapat kolerasi positif jumlah panjang dan jumlah berat *M. rosenbergii* ($r = 0.941$, $p < 0.001$) menunjukkan pertambahan jumlah panjang akan mengakibatkan pertambahan jumlah berat. Kolerasi positif Cu, Mn dan Fe dalam tisu otot, insang dan hepatopankreas dikesan dengan saiz yang semakin meningkat. Sungai Batang Lupar mempunyai indeks bahaya 80.94 untuk logam berat yang berbahaya kepada kesihatan manusia. Semua logam dalam *M. rosenbergii* adalah melebihi had yang dibenarkan. Oleh itu, *M. rosenbergii* dari sungai Batang Lupar telah tercemar dan mendatangkan risiko tinggi kepada kesihatan manusia.

Kata kunci: *Macrobrachium rosenbergii*, logam berat, risiko kesihatan manusia, Sungai Lupar.

TABLE OF CONTENT

	Page
Declaration	i
Acknowledgement	ii
Abstract	iii
<i>Abstrak</i>	iii
Table of content	iv
List of tables	vi
List of figures	viii
List of abbreviations	ix
CHAPTER 1: INTRODUCTION	1
CHAPTER 2: LITERATURE REVIEW	3
2.1 The Taxonomy and Morphology of <i>M. rosenbergii</i>	3
2.2 Habitat and Biology of <i>M. rosenbergii</i>	4
2.3 Comparison of Heavy Metal Contents in <i>M. rosenbergii</i>	5
2.4 Permissible Limit of Metals and Potential Human Health Risks	7
CHAPTER 3: MATERIALS AND METHODS	9
3.1 Study Location	9
3.2 Collection of Samples	10
3.3 Acid Wash	10
3.4 Sample Digestion	10
3.5 Heavy Metals Analysis	11
3.6 Blank and Standard Calibration of Metals	11
3.7 True Metal Concentration Values Calculation in Samples	12
3.7.1 <i>M. rosenbergii</i> samples	12
3.7.2 Sediments samples	13
3.8 Accuracy Validation	13
3.9 Survey on Weekly Prawn Intakes	14
3.10 Bioaccumulation Factor (BAF) in <i>M. rosenbergii</i>	14
3.11 Human Health Risk Assessment	14
3.12 Statistical Analysis	15
CHAPTER 4: RESULTS AND DISCUSSION	16
4.1 <i>M. rosenbergii</i> Identification	16
4.2 The Correlation of Total Length and Weight of <i>M. rosenbergii</i> from Lupar River	18
	iv

4.3 The Relationship of Metal Concentrations in Body Parts with Total Length of <i>M. rosenbergii</i> in Lupar River	20
4.3.1 Copper	21
4.3.2 Manganese	22
4.3.3 Cobalt	23
4.3.4 Iron	24
4.3.5 Aluminium	26
4.4 Bioaccumulation Factor of <i>M. rosenbergii</i> from Sediment	29
4.5 Human Health Risk Assessment	32
CHAPTER 5: CONCLUSION AND RECOMMENDATIONS	36
CHAPTER 6: REFERENCES	37
APPENDICES	43

LIST OF TABLES

		Page
Table 1	Metals concentration in <i>M. rosenbergii</i> of difference location from several previous studies.	6
Table 2	The coordinates of 3 sampling stations in Lupar River, Sri Aman.	9
Table 3	The standard concentration of each metal, Cd, Cu, Mn, Co, and Fe was determined using FAAS. The calibration fit value of metals must exceed the acceptable fit limit of 0.995.	11
Table 4	The calibration process result.	12
Table 5	The standard concentration of Al was determined using ICP-OES. The calibration fit value of metal must exceed the acceptable fit limit of 0.99.	12
Table 6	Result of calibration process of Al.	12
Table 7	The recovery percentage of metal concentration in internal standard.	13
Table 8	The range and mean \pm SD of the total length (cm) and weight (g) of <i>M. rosenbergii</i> collected in Lupar River.	19
Table 9	The result of Pearson's correlation of total length(cm) and total weight(g) of <i>M. rosenbergii</i> in Lupar River.	19
Table 10	Summarized table of metal concentrations in all body parts of <i>M. rosenbergii</i> (mg/kg).	20
Table 11	The Pearson correlation values and the significant values of Cu concentration in muscle tissue, exoskeleton, gill, and hepatopancreas.	22
Table 12	The Pearson correlation values and the significant values of Mn concentration in muscle tissue, exoskeleton, gill, and hepatopancreas.	23
Table 13	The Pearson correlation values and the significant values of Co concentration in muscle tissue, exoskeleton, gill, and hepatopancreas.	24
Table 14	The Pearson correlation values and the significant values of Fe concentration in muscle tissue, exoskeleton, gill, and hepatopancreas.	25

Table 15	The Pearson correlation values and the significant values of Al concentration in muscle tissue, exoskeleton, gill, and hepatopancreas.	27
Table 16	Metals concentration in sediment (mg/kg) from Lupar River (mean \pm S.D).	30
Table 17	The bioaccumulation factors of Cd, Cu, Mn, Co, Fe and Al in body parts of <i>M. rosenbergii</i> samples from Lupar River.	30
Table 18	The outcomes of weekly <i>M. rosenbergii</i> consumption surveys conducted among residents living near the Lupar River.	32
Table 19	The calculated DIM, HRI and Hi values for heavy metals analysed from Lupar River, and the provisional maximum tolerable daily intake (PMTDI, mg/kg/day).	33
Table 20	The comparison of metals concentration in <i>M. rosenbergii</i> to the permissible limit set by JECFA (2012) and MFA (1983).	33

LIST OF FIGURES

	Page
Figure 1	4
Figure 2	9
Figure 3	17
Figure 4	17
Figure 5	18
Figure 6	18
Figure 7	18
Figure 8	20
Figure 9	22
Figure 10	23
Figure 11	24
Figure 12	25
Figure 13	27

LIST OF ABBREVIATIONS

Al	Aluminium
As	Arsenic
BAF	Bioaccumulation Factors
BC	Blue Claws
BDL	Below Detection Limit
Cd	Cadmium
Co	Cobalt
Cu	Copper
DIM	Daily Intake Metals
DW	Dry Weight
EPA	Environmental Protection Agency
FAAS	Flame Atomic Absorption Spectrophotometer
FAO	Food and Agriculture Organization
Fe	Iron
FW	Flesh Weight
HCl	Hydrochloric Acid
Hg	Mercury
HI	Hazard Index
HNO ₃	Nitric acid
HRI	Hazard Risk Index
ICP-OES	Inductively Coupled Plasma - Optical Emission Spectrometry
JECFA	Joint Expert Committee on Food Additives

MFA	Malaysian Food Act
Mn	Manganese
Nd	Not Detectable
Ni	Nickel
OC	Orange Claws
Pb	Lead
QC	Quality Control
Rfd	Reference Dose
SD	Standard Deviation
SPSS	Statistical Package for the Social Sciences
TL	Total Length
TW	Total Weight
USEPA	United States Environmental Protection Agency
WHO	World Health Organization
Zn	Zinc

CHAPTER 1

INTRODUCTION

The freshwater prawn (*Macrobrachium rosenbergii*) can be found through all tropical and subtropical regions of the world (Habashy *et al.*, 2012). *M. rosenbergii* is a well-known seafood product and export (Banu and Christianus, 2016). It has also gained in popularity due to its high price and delicate flavour. *M. rosenbergii* usually be sold at a price between RM50 to RM90 per kilogram depending on the grade. This species can be found in large numbers in the natural habitat in the Lupar River, Sarawak and can be caught easily by local fishermen.

Heavy metal contamination in the environment is becoming an alarming issue, and it is raising widespread concern owing to its negative consequences. Heavy metals have the potential to be toxic to the marine biota (Kahlon *et al.*, 2018). Heavy metals are not biodegradable, even low levels of heavy metals are harmful and its affecting the animals, and humans. (Brodin *et al.*, 2017; Gu *et al.*, 2018; Ferrey *et al.*, 2018; Wang *et al.*, 2020). The increase of industrialization, agricultural, urbanisation and domestic waste discharge has introduced a variety of contaminants into the aquatic environment (Sankhla *et al.*, 2016). Due to the persistence and high toxicity of heavy metals to aquatic organisms, they are considered pollutants of the freshwater ecosystem (Su *et al.*, 2017).

The rapid human activities along the Lupar River may increase the concentration of the toxic metals. Heavy metal pollution has emerged as a result of anthropogenic activity, which is the primary cause of pollution; leaching of metals from various sources such as the rubber industry, pepper, oil palm, paddy, and livestock farming are among the major activities carried out by Sri Aman's farming population (Department of Agriculture Sarawak, 2021). The discharge of industrial, municipal, and agricultural wastewaters and sewage into rivers has been identified as a major source of heavy metals into aquatic resources. They readily absorb

suspended particles in water, settling in the riverbed before being discharged into the water column, where they can represent a secondary source of contamination, endangering ecosystems (Titilawo *et al.*, 2018; Manoj *et al.*, 2012; Yi *et al.*, 2017).

Thus, the various industrial waste, domestic sewages, and agricultural run-off have all contributed to an increase in heavy metal contamination in the water bodies. The industrial and agricultural wastes were illegally dumped into rivers without proper treatment and it becomes one of the sources of heavy metal pollution in rivers (Ahmed *et al.*, 2021). Heavy metals can accumulate in prawns, which are often located at the bottom of the aquatic food chain, and they have negative health consequences on humans. Typically, prawns absorb metals from their food and water, which are then circulated and stored in specific organs (Aytekin *et al.*, 2019). Due to the non-biodegradability of heavy metals, the accumulation of heavy metals in prawn has been recognized as posing significant health risks when transferred to humans via the food chain (Anani and Olomukoro, 2018). *M. rosenbergii* is one of the food sources for residents living near the Lupar River. Hence, it is crucial to assess the concentrations of heavy metals accumulated by *M. rosenbergii* to establish metal intake status around this region.

Therefore, the objectives of this study were to:

- i. To assess the heavy metals content (i.e. Cd, Cu, Mn, Co, Fe, Al) in *M. rosenbergii* from Lupar River.
- ii. To estimate the health risk to human nearby Lupar River.

CHAPTER 2

LITERATURE REVIEW

2.1 The Taxonomy and Morphology of *M. rosenbergii*

M. rosenbergii is a giant freshwater prawn that belong to the largest genus, *Macrobrachium* and a commercially significant species of the family Palaemonidae (New, 2002). Below shows the taxonomy classification of *M. rosenbergii*.

Kingdom : Animalia
Phylum : Arthropoda
Subphylum : Crustacea
Class : Malacostraca
Order : Decapoda
Family : Palaemonidae
Genus : *Macrobrachium*
Species : *Macrobrachium rosenbergii*

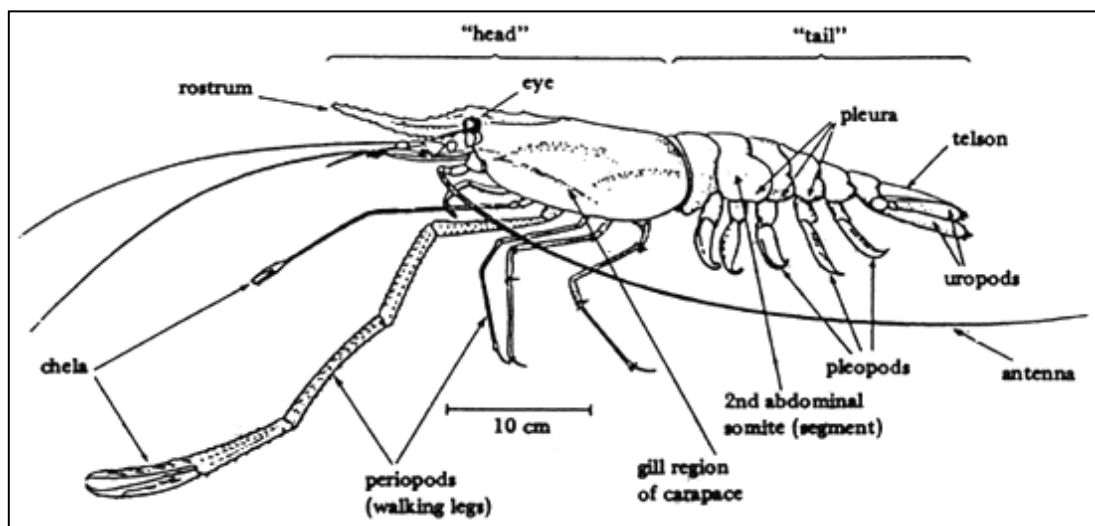


Figure 1 The external morphology of *M. rosenbergii*. Source: (New, 1988)

The morphology of *M. rosenbergii* is shown in Figure 1. *M. rosenbergii* adults are divided into two distinct parts: the cephalothorax (head) and the abdomen (tail). The cephalothorax is composed of stalked eyes, a rostrum, two pairs of antenna, and five pairs of walking legs, while

its abdomen is composed of a pleura, pleopods, a telson, and a pair of uropods. The body colour of *M. rosenbergii* ranges from greenish brown to greyish blue, with darker and lighter colour streaks spreading longitudinally or irregularly (New, 2002).

Furthermore, there are differences between male and female prawns. Male prawns are significantly larger than female prawns. Males have a larger cephalothorax(head) than the abdomen while female prawns have a smaller head and a wider abdomen. The chelipeds of male prawns appeared long and massive compared to female prawns (Idrus *et al.*, 2018; Nandlal and Pickering, 2005).

2.2 Habitat and Biology of *M. rosenbergii*

This species can be found in tropical freshwater environments influenced by brackish water. It is commonly found in highly turbid environments. The life cycle of a prawn is divided into four stages: 1) egg, 2) larva, 3) postlarva, and 4) adult. The duration of each phase and the rate of growth are influenced by the environment, water temperature and food availability. Males and females reach first maturity within four to six months with a weight of approximately 15–35 g (Nandlal and Pickering, 2005). Spawning and nursing up to the post-larval stage require brackish water, whereas juveniles are mostly found in fresh-water zones (New, 2002).

Freshwater prawns undergo a moulting process in which they shed off their exoskeleton as they grow. Females moult prior to mating and have a soft shelled, while males remain unchanged and hard-shelled. Fertilization of freshwater prawns occurs externally after the eggs are extruded. The male deposits its sperm in the form of a gelatinous mass during mating. After mating, the female will start laying their eggs after about five to six hours. Females may move from freshwater to brackish water in order to hatch the egg, as developed larvae require brackish water within one to two days or they will not survive. Alternatively, larvae hatch and migrate down the river to the coastal zone (D'Abramo *et al.*, 2003; Saravanan *et al.*, 2008).

Freshwater prawn metamorphoses into postlarvae after they have completed their larval life. They resemble miniature adult prawns at this point and are mostly crawling rather than swimming. Freshwater prawn postlarvae exhibit a strong tolerance for a wide range of salinities. Postlarvae begin to travel upstream into freshwater environments within one or two weeks of metamorphosis. Freshwater prawns in their postlarval stage are omnivorous. As they grow, they consume aquatic insects and larvae, algae, mollusks, worms, and other crustaceans (D'Abramo *et al.*, 2003).

The postlarva, which becomes juveniles as it matures, has five distinct horizontal lines on its carapace. Juveniles lack a crest on the rostrum, and their teeth are crowded closely together with little space between them. Adults and juveniles move slowly during the day and seek shade and cover in shallow areas of rivers, canals, and ponds, and become extremely active at night (Nandlal and Pickering, 2005).

2.3 Comparison of Heavy Metal Contents in *M. rosenbergii*

The concentration of heavy metals such as Cd, Cu, Zn, and Pb usually higher in males prawns compared to female prawns due to its size. Male prawns are larger in size and heavier in weight, which means they can accumulate a higher concentration of heavy metals. This is consistent with the findings from several studies (Idrus *et al.*, 2018,2021; Islam *et al.*, 2017; Mostafiz *et al.*, 2020). Moreover, heavy metals accumulate variably in *M. rosenbergii* depending on location. Table 1 shows the comparison of metals concentration of difference location from several previous studies.

Table 1 Metals concentration in *M. rosenbergii* of difference location from several previous studies.

Location	Metals	Concentrations (mg/kg)	Body parts	References
Sarawak River, Sarawak.	Cd, Co, Cu, Zn, Hg	Muscle tissue (range): Cd (0.46-0.50 mg/kg) Cu (6.62-10.18 mg/kg) Zn (10.87-13.76 mg/kg) Exoskeleton (range): Cd (0.57-0.79 mg/kg) Co (3.99-5.67 mg/kg) Cu (7.65-10.47 mg/kg) Zn (6.98-7.36 mg/kg) Gill (range): Cd (1.51-1.53 mg/kg) Co (13.77-15.17 mg/kg) Cu (17.09-21.58 mg/kg) Zn (52.56-59.17 mg/kg) Hg (0.11-0.13 mg/kg)	Muscle tissues, exoskeletons and gills	Idrus <i>et al.</i> , 2021
Kerang River, Sarawak.	Cd, Cu and Zn	Muscle tissue: Cd (0.07±0.03 mg/kg) Cu (1.00 ± 0.18 mg/kg) Zn (1.20±0.41 mg/kg) Gill: Cu (52.25±9.37 mg/kg) Zn (14.69±3.76 mg/kg) Exoskeleton (range): Cd (0.20 – 0.28 mg/kg) Cu (3.30 – 4.00 mg/kg) Zn (1.50 – 2.30 mg/kg)	Muscle tissues, gills and exoskeletons	Idrus <i>et al.</i> , 2018
Chittagong and Chandpur, Bangladesh.	Pb, Cr, No, Cd, Fe, Cu, Zn and Mn	Cephalothorax (range): Pb (5.08-5.92 mg/kg) Cr (5.37-8.3 mg/kg) Ni (0.04-0.09 mg/kg) Cd (0.4-0.28 mg/kg) Fe (121.41-190.65 mg/kg) Cu (66.8-3.94 mg/kg) Zn (97.69-211.57 mg/kg) Mn (35-38.75 mg/kg) Abdomen (range): Pb (9.55-9.66 mg/kg) Cr (4.13-5.18 mg/kg)	Cephalothorax and abdomen	Mostafiz <i>et al.</i> , 2020

		Ni (0.91-3.66 mg/kg)		
		Cd (0.11 mg/kg)		
		Fe (45.49-67.29 mg/kg)		
		Cu (32.98-33.49 mg/kg)		
		Zn (45.62-49.16 mg/kg)		
		Mn (18.09-19.75 mg/kg)		
Dhaka, Bangladesh.	Cd, Hg, Co	Muscle tissues: Cd (2.38 ± 0.69 mg/kg) Hg (6.59 ± 0.35mg/kg) Co (7.20 ± 0.12 mg/kg)	Muscle tissues and exoskeletons	Islam <i>et al.</i> , 2017
		Exoskeleton: Cd (2.67 ± 0.41 mg/kg) Hg (6.31 ± 0.19 mg/kg) Co (7.26 ± 0.11 mg.kg)		

Furthermore, wild prawns were more contaminated than farmed prawns. As wild and farmed prawns were compared, it was discovered that the majority of trace metals accumulated more commonly in wild-caught prawn samples from natural bodies of water than in farmed prawn samples in Bangladesh (Mostafiz *et al.*, 2020). Trace metal is more likely to accumulate in wild prawns than in farmed prawns due to the sources of trace metal intake in farming being limited compared to those in polluted natural waterbodies (Mostafiz *et al.*, 2020). Besides, changing of water in the prawn farms helped in reducing the metals accumulation in the water or sediment. Natural waterbodies, such as freshwater, have been rapidly contaminated with toxic metals from industrialization, agricultural, urbanisation and domestic waste discharge (Sankhla *et al.*, 2016), causing wild prawns to accumulate higher concentrations of metal than farmed prawns.

2.4 Permissible Limit of Metals and Potential Human Health Risks

Contaminants from the environment can make their way into food. Permissible limits for levels of heavy metals in food for human consumption was established by the Joint FAO/WHO Expert Committee on Food Additives (JECFA, 2012). The permitted levels of heavy metals for human consumption are 2 mg/kg for Cd, 30.00 mg/kg for Cu, 1 mg/kg for Mn, 100 mg/kg

for Fe and 50-70 mg/kg for Al. Exceeding these limits could pose a potential negative health impact to human.

Some heavy metals have functional roles that are required for a variety of physiological and biochemical activities in the body. However, high doses of heavy metals pose a number of hazards to human health. According to Tong *et al.* (2013), cobalt (Co) contamination in the human body can be harmful to the developing foetus in pregnant women. Frequent vomiting and diarrhea, changes in blood pressure, or headaches are some of the other symptoms. Moreover, high Co concentrations can wreak havoc on the immune system (Bezerra *et al.*, 2014; Valera *et al.*, 2014). Cadmium (Cd) is efficiently kept in the human body once absorbed, where it accumulates throughout life. However, Cd is most toxic to the kidney, especially the proximal tubular cells, which accumulate the most. The impact of Cd is bone demineralization, which occurs direct or indirect through renal failure (Bernard, 2008). Other than that, the excessive of copper (Cu) causes acute effects such as nausea or abdominal pain (Taylor *et al.*, 2020). Moreover, neurotoxicity, including cognitive and learning deficits and hyperactivity in children, is one of the major adverse effects reported in several studies of occupational and environmental manganese (Mn) exposure (Hermes *et al.*, 2013; Carvalho *et al.*, 2018; Bouchard *et al.*, 2018). Meanwhile, aluminium (Al) in high concentrations can have serious health consequences, including damage to the central nervous system, dementia, memory loss, and listlessness accompanied by severe trembling as reported by Rostern (2017) and a higher iron (Fe) concentration in the human body can cause hemochromatosis, which can lead to end organ damage. Thus, it is concerning that a high intake of contaminated prawns with these metals may threaten human health.

CHAPTER 3

MATERIALS AND METHODS

3.1 Study Location

The study location was at the Lupar River in Sri Aman, Sarawak. The sampling was carried out in three stations. A total of 41 samples of *M. rosenbergii* were collected during this study. Figure 2 and Table 2 illustrate the coordinates of each sampling stations and the map of the sampling location. The sample collections were done from 6th December 2021 to 30th January 2022.



Figure 2 A map showing three sampling stations for sample collection in the Lupar River. (Source: Google Earth)

Table 2 The coordinates of 3 sampling stations in Lupar River, Sri Aman.

Stations	Coordinates	Station description
1	1°13'29.64"N 111°29'24.47"E	<ul style="list-style-type: none"> • Cement factory • Oil palm plantation
2	1°14'9.77"N 111°28'9.06"E	<ul style="list-style-type: none"> • Agriculture farm • Human settlement
3	1°14'59.64"N 111°27'38.04"E	<ul style="list-style-type: none"> • Agriculture farm • Construction site • Human settlement

3.2 Collection of Samples

The samples were collected using cast nets and fishing rods. The prawn samples were then identified following New (2002) reference, and their total length and weight were measured. At low tide, about 5 cm from surface sediment was collected from the river's bank. The sex of each prawn sample was also determined before being kept in a clean plastic zipper bag with a label in the ice box and was kept frozen before being transported back to the laboratory for further analysis.

3.3 Acid Wash

An acid wash procedure was performed to prevent contamination of the apparatus used for sample digestion, sample dilution and standard calibration. All the apparatus were rinsed with water, soaked for 24 hours in 10% HCl, rinsed three times with distilled water, and finally rinsed with deionized water. The apparatus were then air-dried on the acid wash racks.

3.4 Sample Digestion

Muscle, hepatopancreas, exoskeleton, and gills were dissected and weighed before being dried in an oven (at 60°C) until a uniform weight was obtained to assure full drying. Prior to the digestion procedure, the dried prawn samples were ground into powder using a mortar and pestle. The sediment samples were also dried in a 60°C oven overnight and ground before being digested. For prawn samples, the exoskeletons, muscle tissues and gills were weighed at ± 0.30 g while hepatopancreas was weighed at ± 0.10 g in 6 ml of HNO₃. As for sediment samples, ± 0.10 g of the sample were weighed in 10 ml of HNO₃. Then, the mixture were then placed in the inert polymeric microwave vessels and were digested using the Multiwave Go Plus microwave digestion system (Anton Paar). The microwave digester system sealed the vessel and heated it according to the method chosen for digesting the sample. For prawn sample, Organic B method on the Multiwave Go Plus microwave (Anton Paar) was used, and for sediment sample, EPA Method 3051a (USEPA, 2007) was used. After the contents of the

vessel had cooled, they were filtered using 0.45µm fibre filter paper, diluted in a volume of 100 ml, and placed in the bottles.

3.5 Heavy Metals Analysis

The heavy metal concentrations of Cd, Cu, Mn, Co, and Fe in all samples, including standard solutions, were determined by using a Flame Atomic Absorption Spectrophotometer (FAAS; Thermo Scientific iCE 3500), while Al was determined using Inductively Coupled Plasma Optical Emission spectroscopy (ICP-OES; Perkin Elmer Optima 800). The blank that consists of the digestion acids was also analysed following the same method.

3.6 Blank and Standard Calibration of Metals

During the preparation of sample digestion, sample blanks were prepared using the same method as samples, with acid diluted in deionized water. Each metal's calibration standard was prepared by diluting master solution (Cd, Cu, Mn, Co, Fe and Al) with 100 ml with deionized water, according to the required concentrations as shown in Table 2. The table shows the standard solution concentrations and the calibration fit for each metal. Cd, Cu and Mn were analysed using (FAAS; Thermo Scientific iCE 3500) while Co and Fe were analysed using (FAAS; Analytik Jena).

Table 3 The standard concentration of each metal, Cd, Cu, Mn, Co, and Fe was determined using FAAS. The calibration fit value of metals must exceed the acceptable fit limit of 0.995.

Element	Quality Control (ppm)	Blank	Standard 1 (ppm)	Standard 2 (ppm)	Standard 3 (ppm)	R ²
Cd	1.0	0.00	0.5	1.0	1.5	0.9971
Cu	1.0	0.00	1.0	3.0	5.0	0.9998
Mn	1.0	0.00	1.0	2.0	3.0	0.9994
Co	1.0	0.00	1.0	3.0	5.0	0.9998
Fe	1.0	0.00	1.0	3.0	5.0	0.9977

Calibration curves that are linear ($R^2 > 0.995$) are preferred because they produce the highest accuracy and precision. The result of the calibration process was shown in the Table 4.

Table 4 The calibration process result.

Element	R ²	RSD (%)	Blank (mg/L)	Detection limit (mg/L)
Cd	0.9971	0.2	-0.001	0.0028
Cu	0.9998	0.3	-0.001	0.0045
Mn	0.9994	0.5	0.002	0.0016
Co	0.9998	3.2	0.000	0.0100
Fe	0.9977	3.0	0.000	0.0043

Al concentration was analysed using ICP-OES because the absent of appropriate lamp for Al in FAAS. Table 5 shown a standard concentration and the calibration fit value (R² > 0.999).

Table 5 The standard concentration of Al was determined using ICP-OES. The calibration fit value of metal must exceed the acceptable fit limit of 0.99.

Metal	Blank	QC (ppm)	Standard 1(ppm)	Standard 2(ppm)	Standard 3(ppm)	Standard 4(ppm)	Standard 5(ppm)	Calibration fit
Al		1.0	0.5	1.0	2.0	5.0	7.5	0.999960

The result of the calibration process was shown in the Table 6.

Table 6 Result of calibration process of Al.

Element	R ²	RSD (%)	Blank (mg/L)	Detection limit (mg/L)
Al	0.999960	1.85%	0.000	Not specified

3.7 True Metal Concentration Values Calculation in Samples

3.7.1 *M. rosenbergii* samples

The results were expressed in mg/L from the FAAS and ICP-OES. The true metals concentrations were then calculated (Equation 1) and expressed in mg/kg flesh weight (FW) for prawn samples. The formula was used to convert the concentration of metals in aqueous to metals concentration in the form of flesh weight.

$$Metal (mg/kg FW) = \frac{A (mg /L) \times B (L)}{Weight (kg)} \dots(1)$$