



**CIVIL ENGINEERING, SCIENCE AND
TECHNOLOGY CHALLENGES:
STRUCTURAL ENGINEERING AND
CONSTRUCTION MATERIALS**

E D I T E D B Y

**Wan Hashim Wan Ibrahim
Siti Noor Linda Taib
Norsuzailina Mohamed Sutan**

**CIVIL ENGINEERING, SCIENCE AND
TECHNOLOGY CHALLENGES:
STRUCTURAL ENGINEERING AND
CONSTRUCTION MATERIALS**

© Wan Hashim Wan Ibrahim, Siti Noor Linda Taib, Norsuzailina Mohamed Sutan

2022

All rights reserved. No part of this publication may be reproduced, stored in a retrieval system, or transmitted, in any form or by any means, electronic, mechanical, photocopying, recording or otherwise, without the prior permission of the publisher.

Published in Malaysia by
UNIMAS Publisher,
Universiti Malaysia Sarawak,
94300 Kota Samarahan,
Sarawak, Malaysia.

Perpustakaan Negara Malaysia

Cataloguing-in-Publication Data

CIVIL ENGINEERING, SCIENCE AND TECHNOLOGY CHALLENGES: STRUCTURAL
ENGINEERING AND CONSTRUCTION MATERIALS / EDITED BY Wan Hashim

Wan Ibrahim, Siti Noor Linda Taib, Norsuzailina Mohamed Sutan.

Mode of access: Internet

eISBN 978-967-2298-90-8

1. Structural engineering.
2. Building materials.
3. Government publications--Malaysia.
4. Electronic books.

I. Wan Hashim Wan Ibrahim. II. Siti Noor Linda Taib.

III. Norsuzailina Mohamed Sutan.

624.1

The book is based on scientific and technological advances in various Structural Engineering and Construction Materials areas of Civil Engineering. It nurtures therefore the exchange of discoveries among research workforces worldwide including those focusing on the vast variety of facets of the fundamentals and applications within the Structural Engineering and Construction Materials arena. To offer novel and rapid developments, this book contains original contributions covering theoretical, physical experimental, and/or field works that incite and promote new understandings while elevating advancement in the Structural Engineering and Construction Materials fields. Works in closing the gap between the theories and applications, which are beneficial to both academicians and practicing engineers, are mainly of interest to this book that paves the intellectual route to navigate new areas and frontiers of scholarly studies in Structural Engineering and Construction Materials.

CIVIL ENGINEERING, SCIENCE AND TECHNOLOGY CHALLENGES: STRUCTURAL ENGINEERING AND CONSTRUCTION MATERIALS

Editors in Chief

Wan Hashim Wan Ibrahim
Siti Noor Linda Taib
Norsuzailina Mohamed Sutan

Editors

Raudhah Ahmadi
Idawati Ismail
Abdul Razak Abdul Karim
Azida Rashidi
Delsye Teo Ching Lee
Mohd Raduan Kabit
Mohammad Ibrahim Safawi bin Mohammad Zain
Ahmad Kueh Beng Hong
Mohammad Abdul Mannan
Ng Chee Khoon
Leonard Lim Lik Pueh
Alsidqi Hasan
Charles Bong Hin Joo
Mah Yau Seng
Norazzlina bt M. Sa'don

Advisory Editors

Taksiah A.Majid
Megat Azmi Megat Johari
Zainah Ibrahim
Mohd Saleh Jaafar
Farah Nora Aznieta Abd. Aziz
Fadzli Mohamed Nazri
Ahmad Baharuddin Abd. Rahman
Md. Habibur Rahman Sobuz

Copy Editors/Proofreaders

Chuah Kee Man
Zayn Al-Abideen Gregory
Helmy Hazmi
Annisa Jamali

Layout Editor

Nur 'Ain Binti Shardi
Freddy Yeo Kuok San
Rose Sima Anak Ikau

TABLE OF CONTENTS

CHAPTER	TITLE OF CHAPTERS	PAGE NO
1	Modified Cement System: Durability And Aesthetics	1
2	Utilization Of Recycled Aggregate As Coarse Aggregate In Concrete	6
3	Effect Of Aggregates And Curing Conditions On The Compressive Strength Of Concrete With Age	13
4	Effect Of Seawater On The Properties Of Epoxy Modified Concrete	21
5	Study The Structural Behavior Of Ferrocement Beam	29
6	Effect Of PFA On Strength And Water Absorption Of Mortar	37
7	Laboratory Study Of Water Absorption Of Modified Mortar	42
8	Performance Of Profiled Steel Sheet Dry Board System Under Flexural Bending And Vibration	48
9	The Effect Of Reinforcement, Expanded Polystyrene (EPS) And Fly Ash On The Strength Of Foam Concrete	57
10	Status Of Industrialized Building System Manufacturing Plant In Malaysia	65
11	Evaluation Of Acacia Mangium In Structural Size At Green Condition	76
12	Basic And Grade Stress For Some Timber In Sarawak	84
13	The Behavior Of Strength Properties From Three Different Tree Boles Of Aras In Sarawak	88
14	Initial Surface Absorption Of Pozzolan And Polymer Modified Mortar	93
15	The Influence Of Finely Ground Mineral Admixture (FGMA) Of Efflorescence	99
16	Characterization Of Early Pozzolanic Reaction Of Calcium Hydroxide And Calcium Silicate Hydrate For Nanosilica Modified Cement Paste	106
17	Strength Characteristics Of Mortar Containing Different Sizes Glass Powder	113
18	Influence Of Silica Based Waste Materials On The Mechanical And Physical Properties Of Mortar	120
19	Effect Of Curing And Mixing Methods On The Compressive Strength Of Mortar Containing Oil	126
20	Improving The Strength Performance Of High Volume Periwinkle Shell Ash Blended Cement Concrete With Sodium Nitrate As Accelerator	133
21	Chloride Resistance Of Blended Ash Geopolymer Concrete	138
22	Evaluation Of Water Hyacinth Stem Ash As Pozzolanic Material For Use In Blended Cement	150
23	Pozzolanic Properties Of Glass Powder In Cement Paste	158
24	Effect Of Organic Soil On Strength Properties Of Compressed Cement-Soil Block	166
25	Effect Of Base Isolator On The Structural Response Of Reinforced Concrete Multistoried Building Under Seismic Loads	174

TABLE OF CONTENTS cont.

CHAPTER	TITLE OF CHAPTERS	PAGE NO
26	Toner Used In The Development Of Foamed Concrete For Structural Use	184
27	Finite Element Simulation Of Damage In RC Beams	192
28	Seismic Performance Of Damper Installed In High-Rise Steel Building In Bangladesh	200
29	Characteristics Of Steel Fiber Reinforced Concrete With Recycled Coarse Aggregate	213
30	Finite Element Analysis Of A Strengthened Beam Deliberating Elastically Isotropic And Orthotropic CFRP Material	218
31	Compressive Strength Of Foamed Concrete In Relation To Porosity Using SEM Images	229
32	Predicting The Structural Performance Of Sandwich Concrete Panels Subjected To Blast Load Considering Dynamic Increase Factor	241
33	Partial Replacement Of Cement By Coffee Husk Ash For C-25 Concrete Production	258
34	Porosity, Permeability And Microstructure Of Foamed Concrete Through SEM Images	267
35	Some Mechanical Characteristics Of Concrete Reinforced With Dried Water Hyacinth And Quarry Dust As Fine Aggregates	282
36	Potential Use Of Cinder Gravel As An Alternative Base Course Material Through Blending With Crushed Stone Aggregate And Cement Treatment	290
37	Water Permeability And Chloride And Sulphate Resistance Of Rubberised Fibre Mortar	302
38	Case Study Of Structural Health Monitoring In India And Its Benefits	315
39	Comparing Compressive Strengths Of Layered And Random Placement Of Expanded Polystyrene Wastes In Quarry Dust Blocks	324
40	Experimental Study On Application Of Marble Waste As Conventional Aggregate For Base Course Materials	331
41	Evaluation Of The Performance Of Waste Marble Dust As A Mineral Filler In Hot-Mix Asphalt Concrete	349
42	Linear And Nonlinear Free Vibration Analysis Of Rectangular Plate Compressive Strength Of Mortar Containing Oil	367
43	Influence Of Oil Palm Spikelets Fibre On Mechanical Properties Of Lightweight Foamed Concrete	379
44	Experimental Study On Behavior Of Unprotected Foamed Concrete Filled Steel Hollow Column Under Fire	388

CHAPTER 17

STRENGTH CHARACTERISTICS OF MORTAR CONTAINING DIFFERENT SIZES GLASS POWDER

N. Tamanna, N. Mohamed Sutan*, I. Yakub and D. T. C. Lee

ABSTRACT

A greater portion of nonrecyclable waste glass is accumulated on landfills creating a serious environmental problem. Recent studies have been carried out to utilize the waste glass in construction as partial replacement of cement. This paper investigates the fineness properties of four sizes glass particles and strength characteristics of mortar in which cement is partially replaced with glass powder in the replacement level with 10%, 20%, 30% and 40%. Mortar cubes containing with varying particle sizes in the ranges of 212 μm , 75 μm , 63-38 μm and lower than 38 μm and in a water to cement ratio of 0.50 and 0.45 have been prepared. Room temperature and relative humidity have been maintained 32°C and 90% respectively during the curing process. Replacement of 10% cement with glass powder reveals the higher compressive strength at 28days than other levels of replacement. The reduction in compressive strength increases with the level of cement replacement.

Keywords: Waste glass powder, cement replacement, compressive strength, 28days.

INTRODUCTION

The generation of waste materials has increased according to the rapid growth of industry and population explosion. The greater portion of these materials do not decompose by itself accumulated on the landfill areas, will remain in the environment for many years, thereby contributing to the environmental problems. The utilization of waste material in construction industries has been increased significantly, in the recent years owing to the short or long term properties of concrete without compromising concrete performance [1]. Waste glass is one such material, which is encouraged for recycling. Theoretically, glass is a 100% recyclable material; it can be indefinitely recycled without any loss of quality [2]. Nevertheless, the recycling rate of waste glass is quite low compared to the other solid wastes because of expensive cleaning and color sorting cost [3]. Environmental regulations and deficiency of landfill space are also encouraging the use of waste glass in concrete production. Several studies were carried out on the use of waste glass as an aggregate for concrete production in the 1960s. The first practice was conducted by Schmidt and Saia [4], 1963 to the use of glass chips to produced architectural exposed aggregate for concrete. The effect on mechanical properties of using waste glass in concrete had been studied by many other researchers, including Johnston (1974), Figg (1981)[5]-[6].

**Faculty of Engineering, Universiti Malaysia Sarawak, Kota Samarahan, Sarawak, Malaysia.
Email: msnorsuzailina@unimas.my*

Owing to high disposal cost of waste glass and environmental regulation the use of glass as cement concrete aggregates has attracted again under attention of the researchers in the last 20 years [7]-[13]. This aggregate was applied in road construction and also used for production of glass tiles, wall panels, bricks, glass fibre, agriculture fertilizer landscaping reflective beads and tableware [14]. Alkali silica reaction considered as an extreme barrier that restrains the waste glass utilization [15]. The feasibility of using waste glass as cement replacement was 1st introduced by Patttengil and Shutt [16]. It was examined that if the glass was powder to a particle size of 300 μm or smaller, the ASR would not be harmful in concrete production [17]. It can act as a pozzolanic material to react with portlandite in hydrated cement to form C-S-H in increasing strength and durability of concrete because of the high silica content in glass powder [18]-[23]. This paper deals the strength characteristics of mortar containing different sizes of glass powder with different water to cement ratio. Cement is replaced by glass powder at rates varying from 10 to 40 percent. Particle size distribution, morphology and compressive strength are studied and made a comparison with control samples.

MATERIALS AND METHODS

RAW MATERIALS:

PORTLAND CEMENT

Ordinary Portland Cement (OPC) ASTM Type 1 which is manufactured by Cahaya Mata Sarawak Cement Sdn. Bhd (CMS) was used throughout the research, and it confirmed the quality requirements specified in the Malaysian Standard MS 522: Part 1: 1989 Specifications for OPC. The relevant physical properties and chemical composition of the OPC ASTM Type 1 obtained from the manufacturer are shown in tables 1.

Table 1: Physical properties and chemical composition of ordinary Portland cement

		Cement (OPC ASTM Type 1)
Physical Properties	Bulk density	1.2 – 1.4 kg/L
	Specific gravity	3.15
	Amount retained on 90 μm sieve (%)	2 %
	Amount retained on 45 μm sieve (%)	18 %
Chemical Composition (%)	Calcium oxide, CaO	64.75 %
	Silicon dioxide, SiO ₂	19.34 %
	Aluminum oxide, Al ₂ O ₃	5.20 %
	Ferric oxide, Fe ₂ O ₃	3.41 %
	Sulphur trioxide, SO ₃	2.85 %
	Magnesium oxide, MgO	1.44 %
	Potassium oxide, K ₂ O	0.47 %
	Sodium oxide, Na ₂ O	0.10 %
	Loss on ignition, LOI	3.42 %
	Free Cao	1.39 %
Total Alkali	0.41 %	

GLASS POWDER

Waste Glass used in this study was soda-lime clear glass bottles collected from recycle center and from the manufacturer. Glass bottles were cleaned with water to remove paper on the surface and to eliminate contaminations. The glass powder is obtained from the grinding machine (Los Angeles Abrasion Machine) in civil engineering laboratory and subjected to mechanical sieve analysis to get the desired particle size. To study particle size effect, four different sizes are used.

- Glass Type 1: Glass powder having particles passing a #70 sieve (212 micron) and retained on a #100 sieve (150 micron).
- Glass Type 2: Glass powder having particles passing a 100 sieve (150 micron) and retained on a #200 sieve (75 micron).
- Glass Type 3: Glass powder having particles passing a #200 sieve (75 micron) and retained on a #400 sieve (38 micron).
- Glass Type 4: Glass powder having particles passing a #400 sieve (38 micron).

SAND AND WATER

Sand used as a fine aggregate was obtained from Civil Engineering Laboratory, UNIMAS which is free from organic or chemical substance and passing through ASTM sieve no.16 aperture 1.18mm sieve. Water used as mixing water was collected from laboratory.

PARTICLE SIZE DISTRIBUTION

The particle size distribution of cement and four sizes glass powder was measured by using CILAS 1090 Laser Particle Size Analyzer.

SCANNING ELECTRON MICROSCOPE

In this research, SEM was carried out to analyze the particle size and shape of waste glass powder using Analytical Scanning Electron Microscope (JSM-6390LA) supplied by JEOL Company Limited, Tokyo, Japan. Waste glass powders were spread on a double sided adhesive conductive carbon tape to prevent scattering of loose particles. Then the samples were coated with platinum in argon gas atmosphere at a high vacuum of 30MPa in order to provide the samples electrically conductive in nature. The photographs, captured at a magnification of 200 are presented in result and discussion section.

COMPRESSIVE STRENGTH TEST

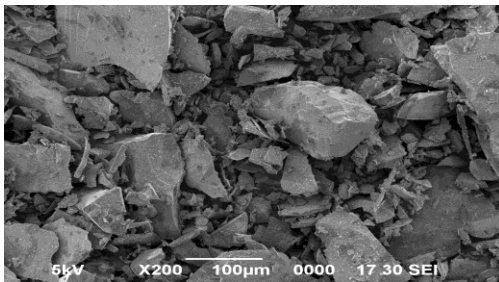
Compressive strength of four type glass powder as cement replacement was investigated in the concrete laboratory. Mortar samples were prepared by glass powder containing 212 μm and 75 μm , 75-38 μm , <38 μm with water to cement ratio 0.50 and 0.45 respectively. Type 1 glass powder was replaced in the level of 10%, 20% & 30% by weight casted into 150mm X 150mm X 150mm and type 2,3,4 glass powder were replaced in the level of 10%, 20%, 30% & 40% by weight casted into 50mm X 50mm X 50mm cube. All the samples were cured in the concrete laboratory with average temperature of 32°C and relative humidity of 90%.

RESULTS AND DISCUSSION

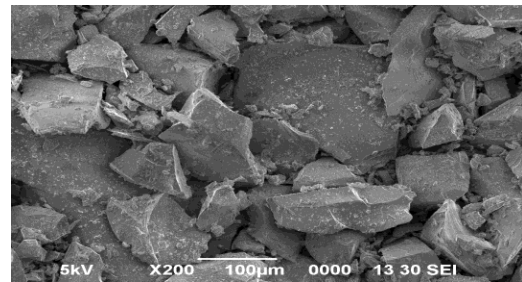
MORPHOLOGY OF GLASS PARTICLE UNDER SCANNING ELECTRON MICROSCOPE

Scanning electron microscope shows the typical shape of four different sizes of glass powder. Glass powder type 1 which represents 212-150 μm exhibit angular shapes but not in uniform sizes. A large number of fine particles present in 212 μm glass powder where as angular flaky particles consist in both 75 μm and 38 μm glass powder.

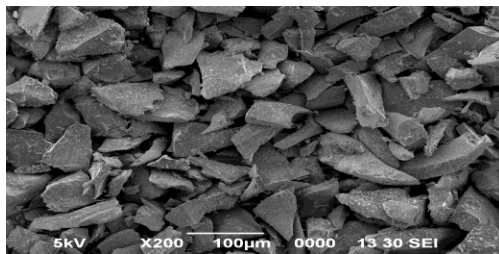
Moreover, 38 μm glass powder shows more angular shapes than glass powder type 1 and 2 as shown in figure1 (c). Glass powder which is lower than 38 μm contains homogeneous angular particles with a sharp edge than any other glass powders, shown in figure 1 (d) that gives similar particle size distribution as Portland cement.



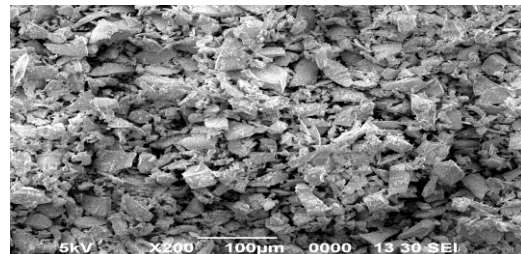
(a)



(b)



(c)



(d)

Figure 1: Shape of glass powder (a) 212-150 μm (b) 150-75 μm (c) 75-38 μm & (d) <38 μm

PARTICLE SIZE DISTRIBUTION

Figure 2 represents the particle size distribution of ASTM Type 1 portland cement and four sizes glass powder. It can be seen that the glass particles lower than 38 μm exhibit almost the same as that of Portland cement. The mean diameter of Portland cement is 21.19 μm while the particles lower than 38 μm is 21.35 μm . Portland cement contains about 50% of particles lower than 18.13 μm whereas glass powder contains 17.15micron. Only one difference is lower than 38 μm glass particles maintain about 10% of particles nearly 4 μm where Portland cement maintains 2.79 μm .

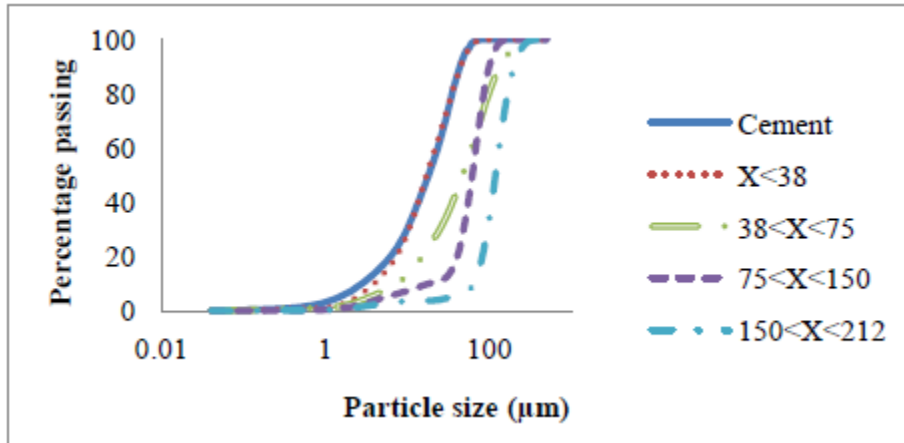


Figure 2: The particle size distribution

Glass type 3 ($38 < X < 75$) shows a coarser distribution than Portland cement and glass type 4 ($X < 38$). The particle size distribution of glass type 3 is very similar in mean diameter but slightly finer than glass type 2 ($75 < X < 150$). Glass type 3 keeps up about 10% of particles finer than 7.50 μm on the contrary glass type 2 keeps up coarser than 18 μm . Glass type 1 ($150 < X < 212$) displays coarser distribution than all type glass and Portland cement wherein 10% of particles contain higher than 64micron but Portland cement does not.

COMPRESSIVE STRENGTH TEST OF MORTAR

The compressive strength of different batches at 28days is shown in figure 3-4. The compressive strength results of 212 μm glass powder (type 1) are plotted in figure 3. Control sample reveals the highest compressive strength than different percentage of replacement. Mortar containing 10% glass indicates slightly lower strength than control sample which is very close to that mortar containing 20% glass. It can be seen that the reduction in compressive strength increases with the level of cement replacement. The reduction in compressive strength is caused by a reduction in the quantity of cement content available for the hydration process.

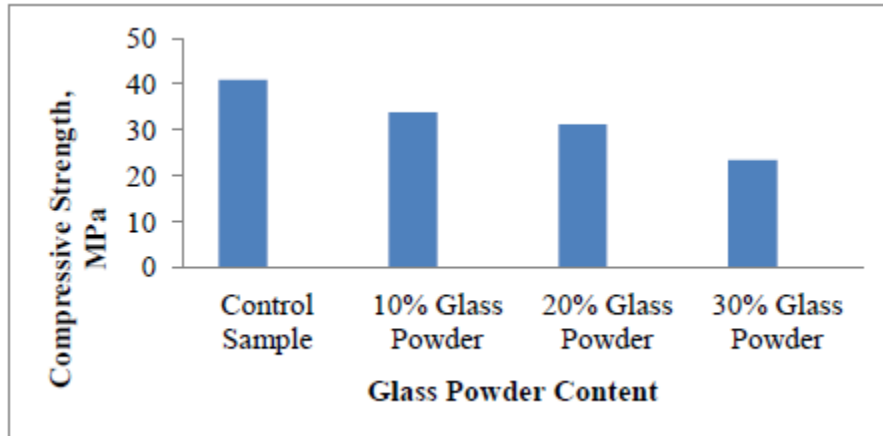


Figure 3: Compressive strength of 212 μm glass powder

The compressive strength results of control sample and type 2, 3, 4 glass powder are plotted in figure 4 at 28 days of curing. Glass particles lower than 38 μm exhibits higher compressive strength than the control sample at 10% level of replacement that is confirmed by Khatib et al. [24]. Another 75 μm and 75-38 μm glass particles show comparatively higher value of strength at 10% replacement.

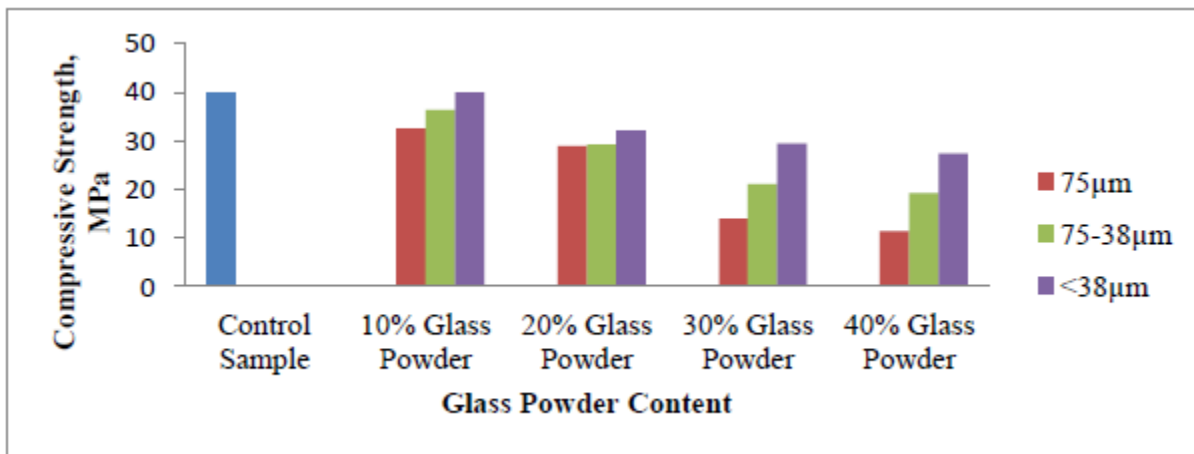


Figure 4: Compressive strength of different sizes glass particles with control sample at 28 days

CONCLUSION

In the present study, the glass powder can be used as a partial replacement of cement. Replacement of 10% cement with glass powder reveals the higher compressive strength at 28 days than other levels of replacement. Finer size glass particle exhibits comparatively better result than coarser particles. Particle size, finer than 38 μm shows almost the same strength as Portland cement, due to the similar particle size distribution. Utilization of waste glass in cement replacement would be beneficial for environment by saving landfill and by reducing CO_2 at atmosphere.

ACKNOWLEDGMENT

The authors acknowledge the research grant provided by Ministry of Education and Universiti Malaysia Sarawak under Fundamental Research Grant (FRGS): FRGS/03(07)/839/2012(73).

REFERENCES

- [1] Patel D., Yadav R.K., Chandak R., "Strength characteristics of pre cast concrete blocks incorporating waste glass powder," *ISCA J. Engineering Sci.*, Vol.1(1),68-70,July(2012).
- [2] Sobolev K., Turker P., Soboleva S., Iscioglu G., 2006, "Utilization of waste glass in ECO-cement: strength properties and microstructural observations," *Waste Management* 27 (7), 971–976.
- [3] Kiang H.T., Hongjian D., "Use of waste glass as sand in mortar: part I-fresh, mechanical and durability properties," *Cement & concrete composites* 35(2013)109-117.
- [4] Schmidt A., Saia W.H.F., (1963), "Alkali-aggregate reaction tests on glass used for exposed aggregate wall panel work," *ACI Mat. J.*, 60, 1235-1236.
- [5] Johnson C.D., "Waste glass as coarse aggregate for concrete, *J. Test. Eval*, 2(5), 1974,pp. 344-350.
- [6] Figg J.W., (1981), "Reaction between cement and artificial glass in concrete," *Proc., Conf. on Alkali-aggregate reaction in concrete*, Capetown, South Africa.
- [7] Pollery C, Cramer SM, De La Cruz RV. "Potential for using waste glass in portland cement concrete". *J Mater Civ Eng* 1998;10(4): 210–9.
- [8] Topcu IB, Canbaz M. Properties of concrete containing waste glass. *Cem Concr Res* 2004;34: 267–74. Van Roode M, Douglas E, Hemmings RT. X-ray diffraction measurement of glass content in fly ashes and slags. *Cem Concr Res* 1987;17(2):183–97.
- [9] Meyer C, Baxter S. Use of Recycled Glass for Concrete Masonry Blocks Final Report 97-15. Albany, New York: New York State Energy Research and Development Authority; 1997.
- [10] Meyer, C., and Baxter, S., 1998. "Use of recycled glass and fly ash for precast concrete". Rep. NYSERDA 98-18 (4292-IABR- IA-96) to New York State Energy Research and Development Authority, Dept. of Civil Engrg. and Engrg. Mech.,Columbia University, New York.
- [11] Chen CH, Huang R, Wu JK, Yang CC. "Waste E-glass Particles used in cementitious mixtures".*Cem Concr Res*2006; 36:449–56
- [12] Byars EA, Morales-Hernandez B, Zhu HY. "Waste glass as concrete aggregate and pozzolan". *Concrete* 2004; 38(1):41–4.
- [13] Bazant ZP, Zi G, Meyer C. "Fracture mechanics of ASR in concretes with waste glass particles of different sizes". *J Eng Mech* 2000; 126:226–32.
- [14] Reindl J. Report by recycling manager, dane County, Department of Public Works, Madison, USA, August 1998.
- [15] Dhir R.K.,Dyer T.D., Tang A.,and Cui Y., (2004), "Towards maximizing the value and sustainable use of glass," *Concrete for the Construction Industry*, 38(1), 38-40.
- [16] Pattengill M., and Shutt T.C., (1973), " Use of ground glass as a pozzolan," *Proc., Int. Symp. on Utilization of Waste Glass in Secondary Products*, ASCE, Albuquerque, N.M.
- [17] Meyer C., Baxter S., Jin W. 1996. Alkali-silica reaction in concrete with waste glass as aggregate. in: K.P.
- [18] Chong (Ed.), *Materials for a New Millennium*, Proceedings of ASCE Materials Engineering Conference, Washington, D.C., pp. 1388–1394
- [19] Shao Y, Lefort T, Moras S. Damian Rodriguez. " Studies on concrete containing ground waste glass". *Cement and Concrete Research* 2000;30(1):91–100.
- [20] Shayan A, Xu A. "Value-added utilisation of waste glass in concrete". *Cement and Concrete Research* 2004; 34(1):81–9.
- [21] Shi C, Wu Y, Riefler C, Wang H. "Characteristics and pozzolanic reactivity of glass powders". *Cement and Concrete Research* 2005;35(5):987–93.
- [22] Shayan A, Xu A. "Performance of glass powder as a pozzolanic material in concrete: a field trial on concrete slabs". *Cement and Concrete Research* 2006;36(3):457–68.
- [23] Ozkan O, Yuksel I. "Studies on mortars containing waste bottle glass and industrial by-products". *Construction and Building Materials* 2008;22(6):1288–98.
- [24] Taha B, Nounu G. "Properties of concrete contains mixed colour waste recycledglass as sand and cement Replacement". *Construction and Building Materials* 2008;22(5):713–20.
- [25] Khatib J.M., E.M. Negim, H.S. Sohl And N. Chileshe, "Glass powder utilization in concrete production," *European Journal of Applied Sciences* 4(4): 173-176,2012.

The book is based on scientific and technological advances in various Structural Engineering and Construction Materials areas of Civil Engineering. It nurtures therefore the exchange of discoveries among research workforces worldwide including those focusing on the vast variety of facets of the fundamentals and applications within the Structural Engineering and Construction Materials arena. To offer novel and rapid developments, this book contains original contributions covering theoretical, physical experimental, and/or field works that incite and promote new understandings while elevating advancement in the Structural Engineering and Construction Materials fields. Works in closing the gap between the theories and applications, which are beneficial to both academicians and practicing engineers, are mainly of interest to this book that paves the intellectual route to navigate new areas and frontiers of scholarly studies in Structural Engineering and Construction Materials



e ISBN 978-967-2298-90-8



9 7 8 9 6 7 2 2 9 8 9 0 8