

Hamadryad Vol. 32, No. 1, pp. 71 – 73, 2008.
 Copyright 2008 Centre for Herpetology,
 Madras Crocodile Bank Trust.

**A SECOND SPECIMEN OF *COMPLICITUS
 NIGRIGULARIS* (OTA & HIKIDA, 1991)**

(with three text-figures)

Large agamid lizards typically inhabit tall trees, and are thus effectively out of the reach of most field collectors. Consequently, several arboreal agamids have been described from relatively well-collected areas in recent years (e.g., Hallermann and Böhme, 2000; Hallermann and McGuire, 2001; Inger and Stuebing, 1994). Additionally, a number of species, long known from the original type series, have been recollected after a hiatus of decades (e.g., Ota and Hikida, 1996; Inger and Lakim, 1998; Das and Das, 2007). In this paper, we report on a specimen of *Complicitus nigrigularis* (Ota & Hikida, 1991), which represents the second known individual of the species.

Complicitus nigrigularis (Ota & Hikida, 1991) enters the scientific literature as *Gonocephalus* sp. (in Hikida, 1980), and was subsequently formally described as *Calotes nigrigularis* Ota and Hikida, 1991, based on a unique type, OMNH R 3964 (ex KUZ 13223; holotype; fide Hatooka, 1996), from “Kinabalu Park, Sabah (alt. ca 1500 m)” (06° 00–15'N; 116° 15–45'E, East Malaysia, Borneo). No further specimens have been reported.

Manthey and Grossmann (1997) diagnosed the monotypic genus *Complicitus* (Latin for black-throated, an allusion to the throat colouration of the holotype), with *Calotes nigrigularis* Ota and Hikida, 1991, as the type species, based on this material. The genus and species were characterised by the following combination of characters: arboreal agamid; dewlap with lateral pockets and granular scutellation; nuchal crest present; limbs and tail relatively short; dorsal scales heterogenous and rhombic, their tips typically rounded and dorsals and ventrals subequal. Apart from listing in taxonomic works (e.g., Welch, 1994; Manthey and Grossmann, 1997; Manthey and Denzer, 2000; Malkmus et al., 2002; Das, 2004; 2006; Das and Yaakob, 2007),



Figure 1. The second known specimen (SP 06712) of *Complicitus nigrigularis* (Ota & Hikida, 1991).

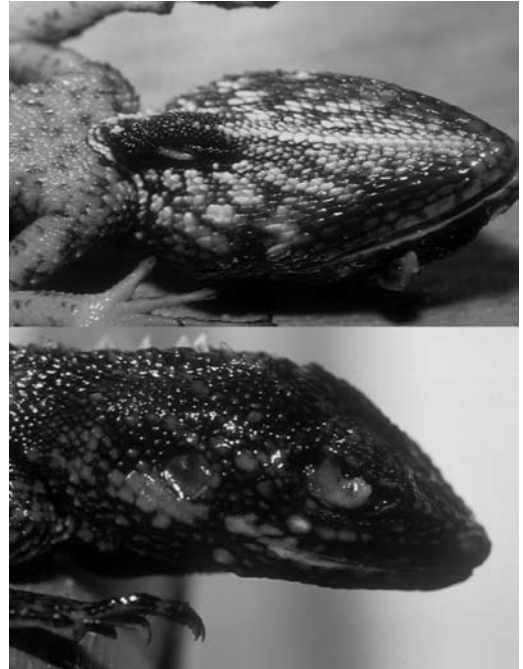


Figure 2. *Complicitus nigrigularis* (Ota and Hikida, 1991), showing head in ventral (top) and lateral (bottom) views (SP 06712).

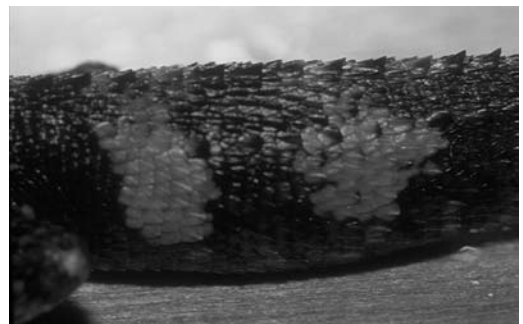


Figure 3. Close-up of midbody of *Complicitus nigrigularis* (Ota & Hikida, 1991), showing heterogenous and rhombic dorsal scales, with rounded tips (SP 06712).