

Reprint From:

(ISSN 1071-8443)

# CHELONIAN CONSERVATION AND BIOLOGY

## International Journal of Turtle and Tortoise Research

Volume 2, Number 4

December 1997

*Kachuga sylhetensis* Recorded from Northern Bengal,  
with Notes on Turtles of Gorumara National Park, Eastern India

INDRANEIL DAS

Published by  
Chelonian Research Foundation

in association with  
IUCN/SSC Tortoise and Freshwater Turtle Specialist Group,  
Conservation International, Chelonia Institute, Wildlife Conservation Society,  
and IUCN (The World Conservation Union) – Species Survival Commission



### ***Kachuga sylhetensis* Recorded from Northern Bengal, with Notes on Turtles of Gorumara National Park, Eastern India**

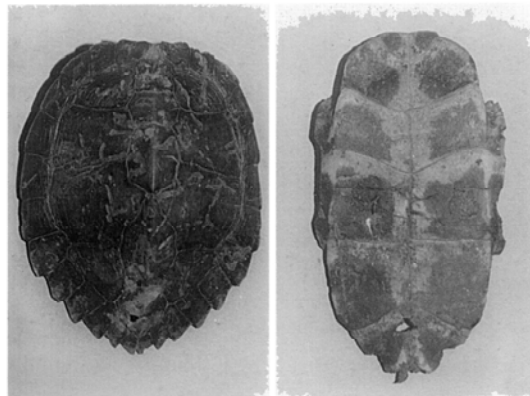
INDRANEIL DAS<sup>1</sup>

<sup>1</sup>Centre for Herpetology, Madras Crocodile Bank Trust,  
Post Bag 4, Mamallapuram, Tamil Nadu 603 104 India

Gorumara National Park (26°80'N; 88°60'E) in northern West Bengal, eastern India, is situated at the foothills of the eastern Himalayas. In terms of geofloristics, the area lies within the *bhabar* tract of moist deciduous forests (Mani, 1974), where snow-fed seepages originating from the mountains disappear under rocks, reappearing at a distance to form swamps and/or join larger rivers. Dominant vegetation includes mature sal, *Shorea robusta*, in association with *Schima wallachi*, *Terminalia* sp., *Lagerstromia* sp., *Premna* sp., *Amoora* sp., *Dillenia pentagyna*, *Ficus glomerata*, and *F. cunea*. The formation represented is Champion and Seth's (1968) East Himalayan lower *bhabar* sal (type 3C/C1b[ii]).

The site is important for several wetland species, including the great Indian one-horned rhinoceros (*Rhinoceros unicornis*). Shaw (1931) wrote about the turtles of the entire district, recording only *Cyclemys dentata* (as *Cyclemys dhor*) and possibly *Geoclemys hamiltonii* (as "near to *Damonia hamiltoni*"). There are no records of turtles specifically from Gorumara in the literature, although several species (including *Indotestudo elongata*, *Aspideretes hurum*, *Chitra indica*, *Kachuga tecta*, *Melanochelys tricarinata*, and *M. trijuga*) have been collected from Baradighi Tea Estate, which abuts the National Park (Das, 1995).

Turtle surveys were conducted at Gorumara National Park between 12–16 March 1997. Visits were made to



**Figure 1.** Shell of *Kachuga sylhetensis* (ZSI 25130) in dorsal and ventral views.